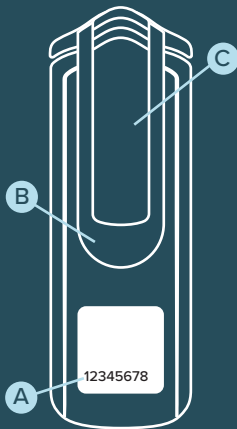


Front



Back



A Clip

C Serial number

B Rotating clip mount

For more information, visit www.instadose.com

Instadose® Dosimeter

Instadose® radiation monitoring technology has revolutionized the way radiation exposure is captured, read and reported.

The first generation Instadose® dosimeter enables dose reads to be performed immediately from any computer with internet access. Simply connect the Instadose® dosimeter into the USB port on the computer and login to our secure web-based account program (instadose.com).

Best of all, you keep your badge – No more badge collecting!



Do not allow dosimeter to overheat.



Do not immerse dosimeter in water.



Do not allow dosimeter to freeze.

Setting up the Dosimeter

1

Sign in to instadose.com

An account administrator must first sign into instadose.com and select 'Users' under the Manage Section.

2

Add Wearer and Fill Out Information

The account administrator will click 'Add User' at the bottom of the list, then complete the required information and assign the dosimeter to the wearer.

3

Download and Install Software

Next, software must be downloaded on the computer(s) that will be used to read/transmit dose reads from the Instadose® dosimeter. Click 'Download Software' under the Manage Section and run the installation wizard. *Please make sure that your web browser allows pop ups from instadose.com.

4

Connect to Computer

Connect the Instadose® dosimeter to the USB-port of the computer.

5

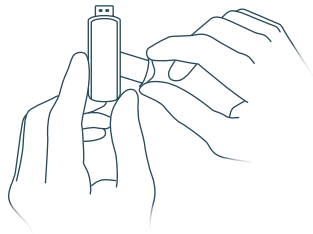
Initialize Dosimeter

Click 'Initialize Device' under the Manage Section.

Capturing Dose Reads

1

Pull the clip to the side to reveal the USB connection on the Instadose® Dosimeter.



2

Connect the dosimeter to the USB-port of the computer and use the Instadose® software to perform a dose read.

